

DISTRIBUTED BY



madisonAV

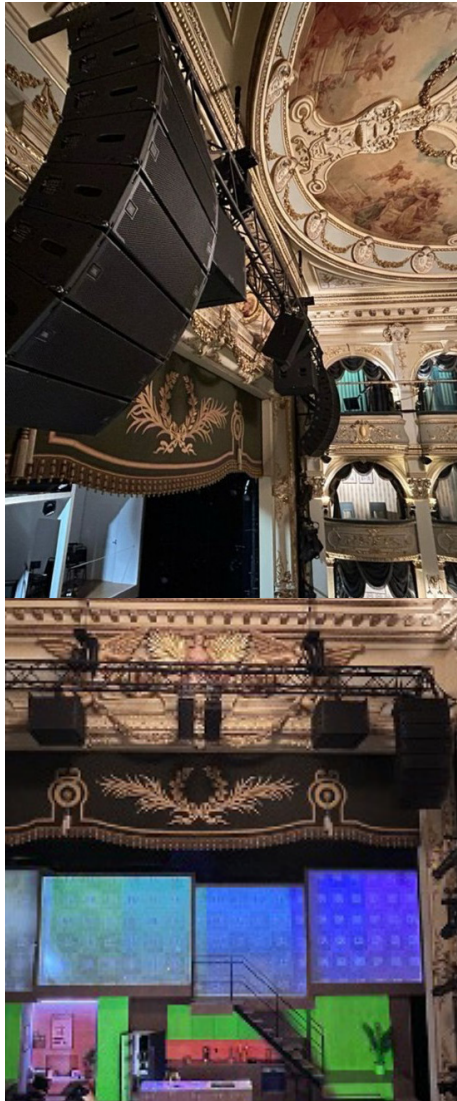


## JBL VTX A-Series in Theatres & Performing Arts Applications.

innovate / distribute / support



# JBL VTX A8 Brings Flawless Sound to London's West End Revival of Next To Normal.



## The Brief:

Nominated for four Olivier Awards, Next To Normal has recently moved from the Donmar Warehouse to the Wyndham's Theatre in London's West End. To enhance the audio experience for this acclaimed musical, sound designer Tony Gayle specified a JBL VTX A8 system due to its ability to deal with the variety of instruments, including drums and percussion, bass, guitar, real upright piano, violin, and cello.

## The Gear:

- Two main hangs of eight JBL VTX A8 line-array elements
- Two ground-mounted JBL VTX B18 subwoofers
- Two flown JBL VTX B18 subwoofers

## The Verdict:

"The JBL VTX A8 is exactly what a theatre system should sound like," says Tony Gayle. "It's incredibly transparent and natural on a whole range of playback or live instruments... it sounds equally impressive at any volume, and when needed, it can go loud without any kind of distortion."

Gayle, whose background in Jamaican sound systems fuels his passion for audio equipment, notes, "The A Series is dealing with the variety of instruments without colouring any of them. There's a fantastic detail and accuracy to the HF which helps keep the sound of every instrument intact in the mix." He appreciates the JBL VTX A8 for its "amazing" out-of-the-box performance and minimal need for excessive DSP tuning. The system's design ensures optimal coverage and sound clarity across the theatre, contributing to the show's outstanding audio reputation. Gayle concludes, "I don't think there's a show I wouldn't spec the JBL VTX A-Series on."

[See full story.](#)



## Revitalising the Historic Stadium Theatre with JBL VTX A-Series



### The Brief

First opened in 1926, the Stadium Theatre is one of only a handful of Vaudeville-era theatres in the country that are still in operation. To modernise the Stadium Theatre for contemporary live shows while preserving its Vaudeville-era aesthetics, the venue required an agile system that not only provided the dynamic range and coverage suitable for a wide variety of performances, but also looked discreet and didn't impede on the venue's historical aesthetics.

### The Gear:

- JBL VTX A8 line array speakers
- JBL VTX B18 and B28 subwoofers
- JBL AC16 ultra compact loudspeakers
- JBL VTX M20 stage monitors
- Crown I-Tech 12000HD amplifiers
- Crown I-Tech 4x3500HD amplifiers

### The Verdict:

Dennis Tancrell, Technical Director of the Stadium Theatre Foundation, praised the JBL VTX A8 system: "We have always had issues getting coverage up to our balcony...But then the A8s came in and before Jeff even started tuning them, they filled the entire place. I knew immediately that it was the rig of choice."

Jeff Hansen, of All Tech Sound, added, "We got beautiful coverage right to the back of the room when we calibrated and tuned the final installation. The spread is phenomenal, and it sounds great."

Hansen also highlighted the advantage of the VTX subwoofers: "The good thing about the VTX subs is that we were able to fly them where we weren't able to in the past thanks to their size and weight."

[See full story.](#)



## Transforming the West End: JBL VTX A-Series in Get Up Stand Up! The Bob Marley Musical.



### The Brief:

Premiered in October 2021, Get Up Stand Up! brought Bob Marley's life story to the stage at London's Lyric Theatre. To match the show's dynamic soundtrack and ensure clear speech intelligibility, sound designer Tony Gayle needed a modern, state-of-the-art audio system that delivered concert-like sound quality along with natural-sounding speech intelligibility and balanced coverage to ensure a comprehensive theatre experience.

### The Gear:

JBL VTX A8 Line Array Speakers (24 total)  
JBL VTX B18 Subwoofers (10 total)  
Crown I-Tech 4x3500HD Amplifiers (10 total)

### The Verdict:

"I made Bob Marley the focus of my design, because it's the music that creates the emotions," said Tony Gayle, Sound Designer. "The main reason I wanted to use the VTX A8 was I knew that whatever source went in, it would leave sounding the same. It's a very transparent box... The sound played a big role in telling the story. You can see the audience when the first kick drum hits. They feel it in their chest. As soon as they hear a song they love, people stand up ready to clap and sing along."

"Aesthetics are very important in theatre, especially in the West End," said Phil Hurley, Founder of Stage Sound Services. "The JBL VTX series succeeded in this respect. On a practical level, they're very well designed, particularly when it comes to transportation and rigging. A major advantage of the VTX series is that it's so lightweight and so easy to deploy."

"Rigging a line array in a West End theatre can be the most impractical thing ever," said David Cole, Production Sound Engineer. "The fact that the JBL system was plug-and-play meant getting everything in the air was nice and straightforward."

[See full story.](#)



# Warner Theatre Upgrades to JBL VTX A-Series for World-Class Sound.



## The Brief:

The Warner Theatre is an iconic landmark located in Erie, Pennsylvania. To equip Warner Theatre with a state-of-the-art sound system, production manager Ryan Patsy collaborated with consultant David Bateman of Acentech and Todd Pander from Dobil Laboratories. Their goal was to install a rider-friendly system capable of supporting a wide range of events including world-class touring artists and local performances.

## The Equipment:

- JBL VTX A8 line array speakers  
(18 total, 9 per side)
- JBL VTX B18 subwoofers (4 total)
- JBL AC25 loudspeakers (front fills)
- JBL AC26 loudspeakers (balcony fills)
- Crown I-Tech 4x3500HD amplifiers
- Crown plug-in for QSC Q-Sys systems (for monitoring amplifiers)

## The Verdict:

"The A8s are crisp and clean. We've had no complaints with the new system," said Patsy. "We used to have complaints before, largely in part because we'd do shows in one day, and they wouldn't have time to tune the system properly under the gun."

Patsy added, "Bands and production crews are really happy when they roll in and see the JBL VTX system in the air. They know their artist is going to be happy with the sound that their audiences get."

David Bateman commented, "To my ears, it sounded incredible. The coverage within the entire space was +3dB or -3dB in every seat, which is the standard for audio coverage uniformity. It was a thing to be heard. Everybody involved from the venue and consulting team was happy." "We've heard nothing but compliments from everyone about how good our new VTX system sounds."

[See full story.](#)



## JBL VTX A8 Delivers Enchanting Sound for RSC's 'My Neighbour Totoro'



### The Brief:

For the Royal Shakespeare Company's stage adaptation of My Neighbour Totoro at London's Barbican, award-winning sound designer Tony Gayle needed a sound system that could handle the diverse sonic demands of the production. The show, featuring a mix of orchestral music, vocal performances, and sound effects, required precise and immersive audio delivery.

### The Gear:

JBL VTX A8 dual 8in compact line array speakers  
JBL VTX B18 subwoofers  
Crown I-Tech 4x3500HD amplifiers

### The Verdict:

"I knew the VTX A8 would do it justice and make my design a lot smoother and easier to put different genres through it," said Tony Gayle. "The A8 footprint scales perfectly into the auditorium. The coverage is excellent, you don't obliterate the people at the front with high SPL for those at the back to get the same experience," added Steve Atkinson, Associate Sound Designer at RSC.

Tony Gayle emphasised, "People sometimes raise their eyebrows when JBL comes into a theatre, but the more they hear it the more they see it's really nice, clear and transparent ...and that's the key takeaway."

Autograph, chosen to supply the system, provided 14 VTX A8 elements and four VTX B18 subwoofers. Their hire manager noted, "We have many enquiries for JBL and there are projects where we are asked to offer design services where the VTX A8 would fulfil the brief."

[See full story.](#)



LINDEMAN  
HALL

OSLO  
NORWAY

## Next-Gen Sound For The Norwegian Academy of Music's Lindeman Hall.



### The Brief:

Located in Oslo, the Norwegian Academy of Music (NMH) is the largest university-level music conservatory in Norway, where many of Norway's top musicians received their education. The Academy's main concert hall, Lindeman Hall, required a sound system that delivered wide and balanced coverage for a diverse range of concerts and genres, to enhance the education and music-listening experience for students.

### The Gear:

JBL VTX A8 line array speakers (25 total, 10 per side and 5 for the centre cluster)

JBL F18 subwoofers (6 total, including 2 added during the upgrade)

Crown I-Tech 4x3500HD amplifiers

### The Verdict:

"The coverage of the VTX A8 speakers is perfect for the size of the hall, and its flat frequency response sounds very natural, yielding versatility for different music styles," said Jan-Stefan Hansen, Director of Pro Audio Sales, LydRommet.

"An important element of the procurement has been to follow up NMH's environmental profile in practice," said Stig Gunnar Ringen, Technical Manager, NMH. "LydRommet's JBL VTX solution utilises pre-existing amplifiers and infrastructure – completely in line with the sustainability goals of the Norwegian Academy of Music."

"The Crown I-Tech amps have speaker presets for all JBL speakers, including the A8," said Hansen. "I used JBL Line Array Calculator and Performance Manager software to fine-tune the system. It's very accurate and precise."

Ringen added, "The JBL VTX system's transparent sound reproduction, plenty of headroom and even coverage are crucial in the hall's unique acoustics."

[See full story.](#)



# Crystal-clear Sound for an Iconic Musical: JBL VTX A-Series in Beautiful: The Carole King Musical Tour.



## The Brief:

Beautiful: The Carole King Musical offers an immersive experience of the life and music of Carole King. The 2020 UK production featured an eight-member pit orchestra to back up the cast, plus a live piano performance. Therefore, the tour required a world-class audio system to deliver the rich, detailed sound of King's classic hits while accommodating the live pit orchestra and maintaining exceptional sound quality throughout the tour.

## The Gear:

- JBL VTX A8 Line Array Speakers (34 total)
- JBL VTX B18 Subwoofers (6 total)
- Crown I-Tech 4X3500HD Amplifiers

## The Verdict:

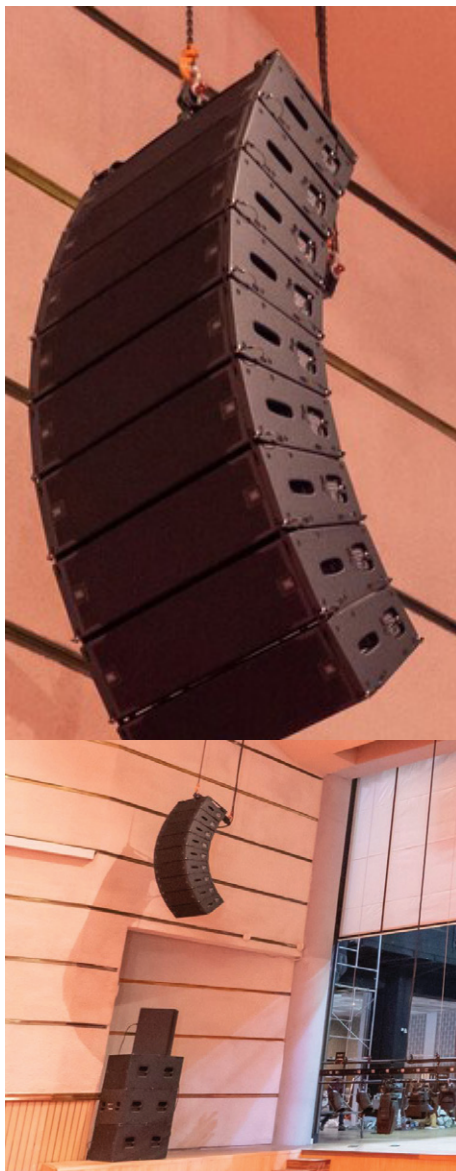
"The first time I heard the VTX A8... I was impressed with how open and transparent it was. Everything that I put into it just sounded great, and you heard the detail of everything that went into it," said Tony Gayle, Sound Designer. "With a show like Beautiful, the orchestrations are so detailed and integral to the show that the A8 was a no-brainer for me. I thought, 'this is the box that I want to showcase the music.'"

"Anyone who hears the JBL VTX loudspeakers comments on how good they sound and how transparent they sound," Gayle added. "A classic compliment on a speaker is if someone says, 'it sounded nice and big, and it didn't hurt my ears' that's a good compliment for me because it means that it sounded nice and loud."

[See full story.](#)



## Chunhyang Culture and Art Centre Elevates Sound with JBL VTX A-Series.



### The Brief:

To enhance sound quality and coverage throughout the Chunhyang Culture and Art Centre, TechDataPS Co. Ltd. was tasked with overhauling the venue's audio system. This multi-purpose space in Namwon, Korea, required a full overhaul to deliver premium sound across all floors of its 778-seat grand performance hall.

### The Gear:

- JBL VTX A8 line array speakers
- JBL VTX B18 subwoofers
- JBL PRX400 Series speakers
- JBL AM Series speakers
- Crown I-Tech 4x3500HD amplifiers
- Soundcraft Vi2000 audio mixer

### The Verdict:

Through pre-simulation, analysis and adjustment, the TechDataPS team achieved uniform sound distribution throughout the entire space.

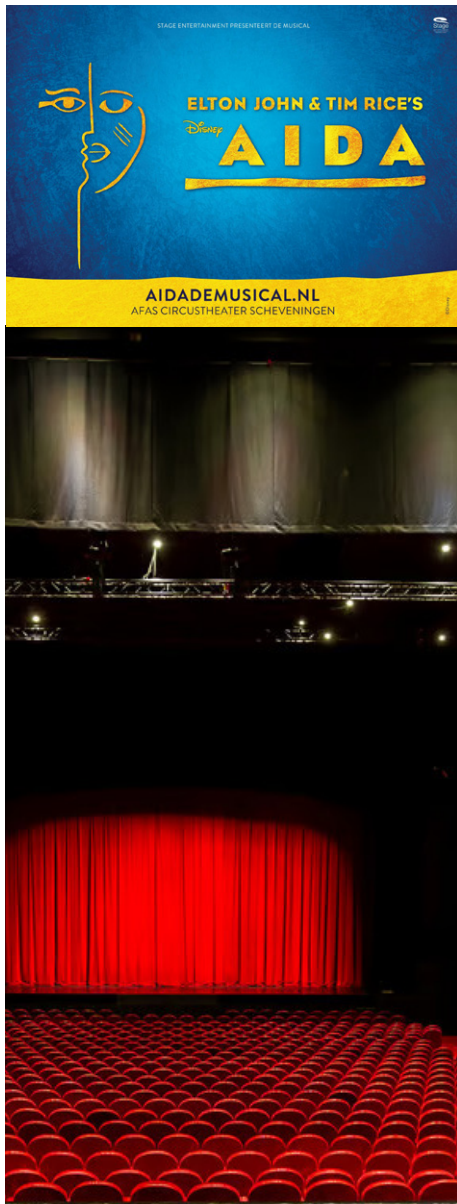
"For a multipurpose venue like Chunhyang Culture and Art Centre, it is imperative to have a cutting-edge audio system," said Amar Subash, Director, Channel Management and Audio Solutions, HARMAN Professional Solutions, APAC. "We would like to thank our partner TechDataPS for providing an enriching experience to the patrons of the art centre and their unwavering confidence in HARMAN's products to deliver unique and engaging experiences."

A spokesperson for the Chunhyang Culture and Art Centre noted how the venue required a high-end audio system to deliver a world-class sound for the wide range of performances throughout the year. They selected the A8 speakers to achieve that goal, and they are very satisfied with the new system overall.

[See full story.](#)



## JBL VTX A8 Delivers World- Class Sound Quality to Disney's Aida



### The Brief:

For the premiere of Disney's re-imagined Aida at the AFAS Circustheater, situated in the Netherlands, director Schele Williams sought a live sound system that would deliver impeccable audio clarity and impact for speech and music alike. The production, a modern adaptation of Elton John and Tim Rice's acclaimed musical, demanded top-tier sound design to match its high expectations.

### The Gear:

40 JBL VTX A8 line array speakers (14 per side, plus three delay hangs)  
10 JBL VTX B18 subwoofers  
Crown I-Tech Series amplifiers

### The Verdict:

"As a sound designer, I'm ultimately responsible for everything the audience hears," said Tony Gayle. "Other speakers can sound great, but they don't sound as great as the VTX A Series. It's as simple as that. I can put up an A8 system and do very little work and get what I want. The A8 is a great sounding box that's won me awards—there's not much more I could ask for in a speaker."

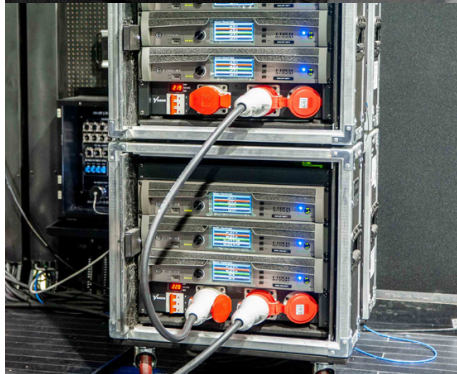
He noted, "Everyone seems really happy with the sound of the show. People working at the theatre commented that it was the best sounding show they've ever heard at the theatre". Gayle continues, "When I make adjustments to the EQ or levels, I hear it straight away. It's like having a sixth sense. I can imagine what the show is going to sound like on that system and be confident in the impact it's going to have."

The production received high praise, with Gayle being nominated for Best Sound Design in the Dutch Music Awards and the show earning seven nominations in total.

[See full story.](#)



# Nodeul Live House Transforms Seoul's Cultural Hub with JBL VTX A-Series Audio Upgrade.



## The Brief:

Nodeul Live House, a premier music venue on Nodeul Island in Seoul, sought to elevate its audio experience with a state-of-the-art sound system. The goal was to deliver crystal-clear sound and even coverage across the venue, enhancing live performances and providing guests with an unforgettable experience.

## The Gear:

- JBL VTX A12 dual 12" line-array loudspeakers
- JBL VTX G28 dual 18" subwoofers
- JBL VTX F12 bi-amplified 2-way loudspeakers
- JBL VTX M20 dual 10" professional monitors
- Crown I-Tech 4x3500HD amplifiers
- Crown VRACK 4x3500HD amplifiers

## The Verdict:

"Nodeul Live House provided detailed requests for their sound setup, which included the solution for reduction of low-frequency booming noise," said a TechDataPS Co., Ltd. spokesperson. "The Nodeul Live House was earmarked as the cultural hub for music in Seoul. Therefore, we felt that it deserved the best-in-class sound solutions available in the market. We chose JBL VTX A12 loudspeakers because they provide an undistorted balance of high-end resolution and precise sound."

The Nodeul Live House spokesperson added, "We were quite dissatisfied with the existing rental equipment. There were consistent issues in the quality of the sound output as well as the distribution of sound pressure. We are delighted with the solutions and designs provided by TechDataPS Co., Ltd. The current setup has met all our criteria and is sure to enthrall our audience in the future."

[See full story.](#)





## Elevate Your Venue with JBL Professional Audio Solutions.

JBL Professional's VTX A-Series is designed to deliver exceptional audio performance, making it the ideal choice for theatres and performing arts spaces. The VTX A-Series combines cutting-edge technology with innovative design to enhance the auditory experience in both historic and contemporary venues. From preserving the classic charm of historic theatres to meeting the modern demands of live performances, there are solutions that seamlessly integrate with any environment while delivering outstanding sound quality. The VTX A-Series ensures clear, powerful, and consistent audio coverage, transforming every seat into a premium listening experience.

### A JOURNEY OF ENGINEERING EXCELLENCE

**Audio technology is at the core of everything JBL does.**

For over 75 years they have employed the best methodology and tools, developing everything from the ground up, guaranteeing their efforts exceed the needs and expectations of audio professionals throughout the world.

Never straying from this exacting formula, this journey has produced a prolific list of audio achievements, ground-breaking technologies, revolutionary advances in the art and science of professional audio, many patents, and many awards.

It's a journey that is legendary worldwide and has positioned JBL as the **world leader in professional audio**. Not just as a brand, but as a company known for consistently blending creativity and science as a manifestation of their passion for sound and commitment to those who create it.





# POWER AND VERSATILITY IS ONLY THE BEGINNING

## A Rich History

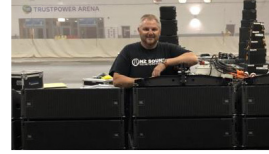
From its inception over 75 years ago, the brand has grown to become synonymous with epic sound.

## JBL is Everywhere

JBL Professional Solutions encompass recording studios, movie theatres, tour sound, installed sound, arenas and stadiums, and much more. JBL is present in more than 130 countries, and encompasses an increasingly diverse range of next-level products and solutions.

## Innovation is our Priority

JBL has contributed a remarkable number of industry firsts and technical innovations that further cemented its reputation as an audio pioneer, garnering Grammy® awards, Academy awards, and widespread recognition. JBL has over 300 patents to its name, such as VGC transducer technology, Slip Stream low frequency port, Progressive Transition (PT) waveguides, and Plus One woofer cone technology.



## JBL TRANSDUCERS

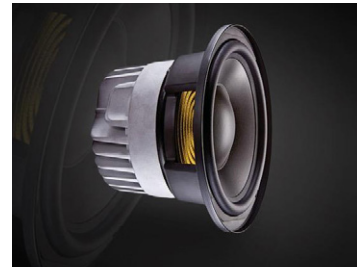
The technology of transducers is truly the starting place for the entire JBL engineering legacy. Building on founder **James B. Lansing's** historic foundation, JBL engineers continue to break ground on new and better ways to design transducers, reaching beyond what is commonly understood as possible.

### Differential Drive®

JBL's exclusive dual voice coil, dual magnetic gap Differential Drive technology **reduces weight while enhancing all critical performance parameters** including better heat dissipation, lower power compression and higher dynamic range versus conventional single-coil designs.

### Dual Diaphragm Dual Voice Coil Compression Driver

The revolutionary Dual Driver **dramatically improves the sound and performance of high frequencies**, providing an extreme output advantage over conventional systems with significantly higher array power, reduced distortion, double the number of voice coils and more than double the power handling.



## DIRECTIVITY & TESTING

### Radiation Boundary Integrator (RBI)

JBL's patented Radiation Boundary Integrator **combines the high frequency and mid-range so the transition across each band is uninterrupted**, undistorted and seamless.

A patented, tuned resonant chamber is integrated into the waveguide itself, effectively eliminating throat-related cancellations due to back pressure from the mid-range section.

### Stringent and Rigorous Testing

Every JBL Professional product undergoes stringent testing above and beyond what the product would face when deployed in the real world. JBL has multiple application specific **anechoic testing chambers**, and has developed the only known 'Speaker Shuffler' that allows rapid and precise re-positioning of speaker systems in the exact same space for truly accurate A/B testing.

